

# TALES OF TRASH!

Rutherford County is planning for a high-tech landfill that should last for 40 years, longer if everyone recycles.

Now, we have only a Construction & Demolition landfill. Most of our waste is trucked at great cost to a landfill with limited capacity.

Dealing with the waste from our expensive lifestyle is also costly.

- We now spend \$1.5 million annually to truck solid waste. PLUS the cost of the roads.
- A lined landfill costs \$500,000 per acre. Every item we recycle helps it last longer and cost less.
- Only 13% of Rutherford County citizens recycle now. If we all recycle a new landfill could last for 63 years or more.

## GET INVOLVED !

- Encourage friends, associates and businesses to recycle and to use AND BUY recycled goods.
- Participate in or start a voluntary recycling program with your school, church, or community.
- Trash matters. Volunteer.
- Join SWEEP - [sweeprecycles@yahoo.com](mailto:sweeprecycles@yahoo.com) or Solid Waste Department 287-6125

## REDUCE !

- Share subscriptions.
- Take your own mug / water bottle.
- Buy in bulk, store in reusable containers.
- Use cloth napkins and towels.
- Use "real" dishes instead of throw-aways.
- Car-pool and plan trips.

## REUSE !

- Newspaper & phone books - clean windows, line litter boxes, mulch, use like free "paper towels."
- Reuse glass bottles & jars to store bulk spices, cereal, flour, & grains.
- Reuse non #1 & 2 plastic containers for supplies and hardware, etc.
- Donate old clothing and appliances to thrift stores.
- Books and magazines can be taken to all Rutherford County public libraries.
- Take styrofoam peanuts and shredded paper to mailing services.
- Swap, trade, & barter.

## IN THE GARDEN

- Cardboard - organic mulch (cover with grass clippings), reuse boxes.
- Egg shells & 2" pieces of paper tubes will keep cutworms and slugs away.
- Cover young plants with milk and water jugs. (Cut off bottom, remove cap and remove if over 90 .)

## RECYCLE !

Use the County's Recycling Program. Convenience Centers are for both recycling and trash. Five of them have SWAP SHOPS where you can put & take for FREE!

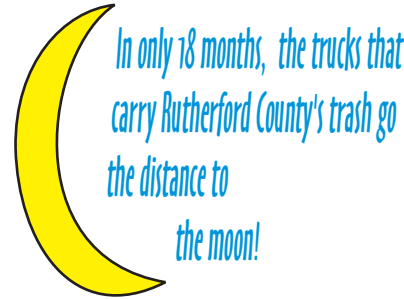
The 6% we now recycle \*

	Solid Waste	Money
* Recyclables	Landfill per year	
	Solid Waste to Landfill	\$502,000
	Handling	\$402,500

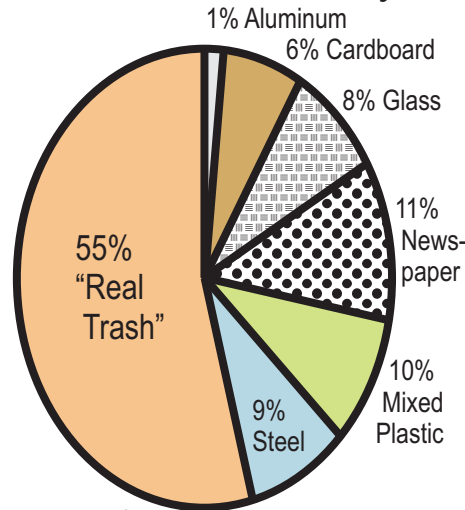
Could be \$66 → if we recycled everything

## Recycling Makes Sense Financially & Environmentally

The County's partner, GDS, Inc. processes ALL recycled items from the Convenience Centers, towns, industries, businesses, and individuals.



## All the Solid Waste in Rutherford County:



**36%**  
36% of our Solid Waste can be recycled at GDS!



Solid Waste Environmental Education Panel

## Everyone in Rutherford County

# PROFITS

when we



# REDUCE

# RECYCLE!